

Model 920 Multi-Gas Analyzer

Benefits

- || Hot/wet analysis prevents errors associated with:
 - Correcting for water vapor
 - Absorption losses in driers
- || Multi-component analysis (up to five species)
- || Multi-range SO₂
- || Simultaneous, independent NO and NO₂ measurement
- || No H₂O or CO₂ interference
- || Automated zero and span calibration
- || Serial communication with plant DCS

The Analyzer

The AMETEK Process Instruments Model 920 has been specifically designed to meet the requirements of the most challenging process and emissions monitoring applications in a cost effective fashion. The Model 920 is a multi-component analyzer capable of measuring up to five different gases simultaneously. It, therefore, performs analyses typically requiring two or more separate analyzers. The Model 920 is a complete system with a sample extraction and transport system designed for maintaining sample integrity. Housing options for the analyzer unit include a cabinet or walk-in shelter built to client specifications.

The simple and robust design of the Model 920 is complemented by powerful data processing capabilities. Both analog and digital outputs are available, with serial communications via Modbus protocol being an available option. An optional oxygen sensor can be included.

In process and emission streams, as a stand-alone system from probe to output, the Model 920 is the standard of excellence and versatility.

The Measurement

The AMETEK Process Instruments Model 920 uses our proprietary

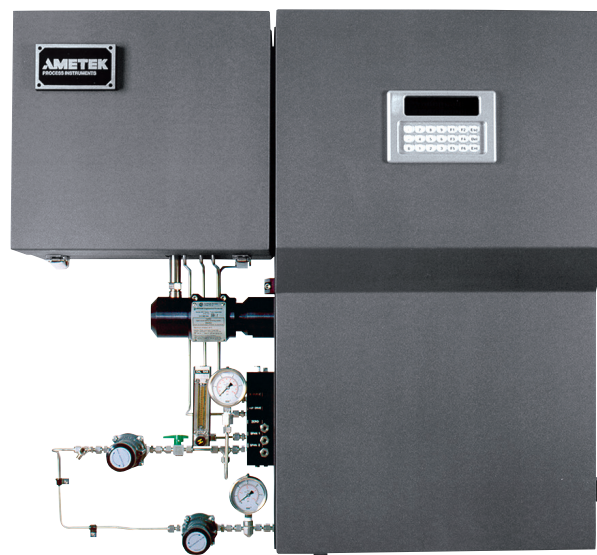
high resolution UV technology in a dual beam, multiple wavelength configuration. Resolution better than 0.02 nm is provided by high intensity, line source lamps. These sources emit at a fixed wavelength, providing great measurement stability, and emit low total power, removing the potential for sample photolysis. The high resolution enables unparalleled linearity over a wide dynamic range (less than 1% deviation over 4 to 5 orders of magnitude) which, in turn, leads to simple, robust data analysis. A six-position filter wheel enables one reference and five measure wavelengths. The dual-beam configuration, combined with the reference measurement, ensures low noise performance with minimal baseline and span drift.

UV measurements do not suffer from H₂O and CO₂ interference as these species are transparent in the UV. This greatly simplifies sample handling. The Model 920 is a fully extractive, heated wet-basis analyzer. The sample cell and all components in contact with the sample are heated above the dew points of all gases in the sample stream. This results in a simpler and more accurate calculation of gas concentrations, requiring no corrections for condensed and

dissolved components. It also results in a simpler analytical system as there is no need for sample drying or conditioning. The Model 920 has built-in zero and span calibration and four zone temperature control.

Typical Applications

- || Power boiler emissions monitoring (SO₂ and NO_x)
- || Sulfur plant stack and feed gas monitoring (SO₂, H₂S, COS)
- || Multiple range SO₂ monitoring in sulfuric acid plants (low ppm to >10%)
- || Process monitoring in nitric acid plants (NH₃ and NO_x)
- || Smelter stack monitoring
- || Sulfuric acid plant control
- || SCR De-NO_x (NO_x and ammonia slip)
- || SRU tail gas clean-up (H₂S and SO₂)
- || SRU feed gas (H₂S and NH₃)
- || TiO₂ production and stack gas (H₂S, Cl₂, COS)



Model 920 Multi-Gas Analyzer

Model 920 Multi-Gas Analyzer

Performance Specifications

Methodology: Multiple wavelength, high resolution, non-dispersive UV

Species Measured	Minimum Full Scale (see note)	Maximum Full Scale
SO ₂	250 ppm	100%
NO	300 ppm	100%
NO ₂	300 ppm	100%
NOx	300 ppm	100%
H ₂ S	500 ppm	100%
NH ₃	125 ppm	100%
Cl ₂	500 ppm	100%
COS	1000 ppm	100%
CS ₂	2500 ppm	100%

Optional O₂: Integral Zirconium Oxide

Accuracy¹: ±1.0% full-scale of standard ranges

±2.0% full-scale of standard ranges for the H₂S+NH₃ application

Repeatability: Better than 0.5% full scale

Linearity: Better than 1% full scale

Response Time: Typically less than 30 s to T90 (excludes sample system)

Number of Gases: Up to 5 simultaneously (refer to AMETEK for possible combinations)

Sample Transport: Air aspiration

Typical Sample Flow: 3 to 5 L/min (0.1 to 0.2 CFM)

Sample Gas Temperature: Ambient to 150°C (302°F)

Temperature Control: Independent control of three zones (oven, sample line, probe)

Pressure and Temperature Compensation: Standard

Ambient Temperature²: 5° to 50°C (41° to 122°F)

Instrument Air: Minimum 413.6 KPa (60 psig), 120 L/min (4.24 CFM), instrument quality air

Communications:

Analog: 4 x 4-to-20 mA self-powered

Digital: One RS232 port for service diagnostics

One RS422 with Modbus protocol

Relays: 3 independent sets of SPDT relays alarm conditions

Power: 120 VAC ±10%, 47-63 Hz or 220 VAC ±10%, 47-63 Hz, 600 W for analyzer only

Physical Dimensions: 1553.6 x 1117.6 x 306 mm (61.17 x 44 x 12 in.)

Weight: Estimated minimum 160 kg (350 lbs)

Approvals and Certifications

NEC/CEC Class I, Division 2, Groups C & D

ATEX II 2 G Ex d e px IIB T3 Gb

IECEx Ex d e px IIB T3 Gb

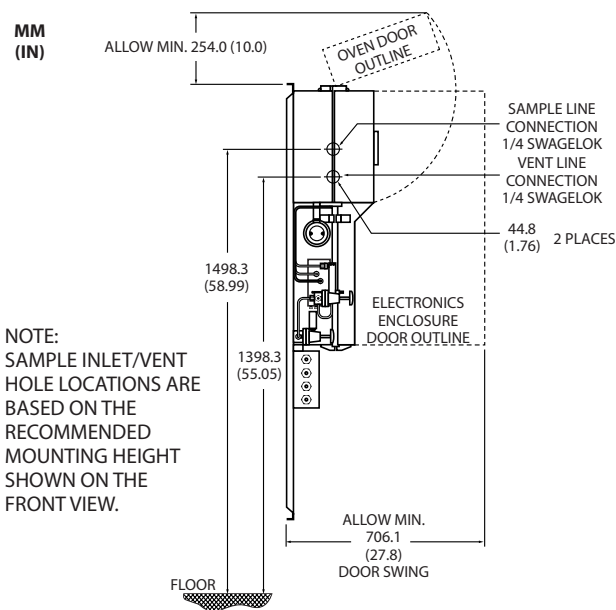
Russian Ex Proof Certification;

1ExpydIIBT3

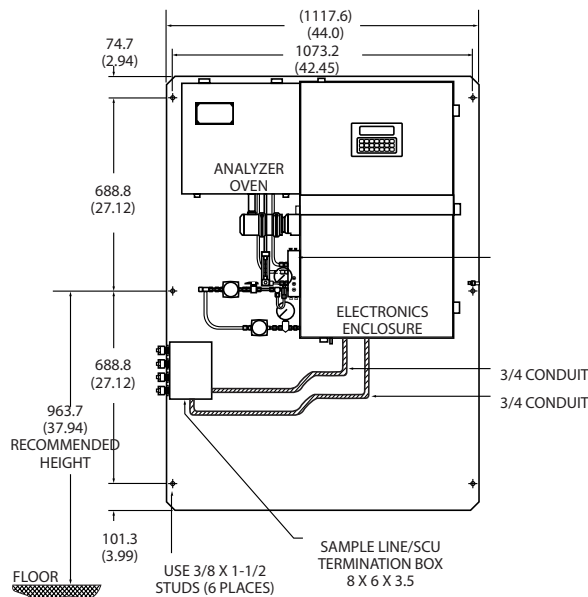
Russian Gosstandard Pattern Approval

Complies with all relevant European Directives

1. Accuracy may vary on some applications where multi-species measurement is required.
2. Temperature drift is approximately 1 ppm/°C for the species listed. To achieve maximum accuracy and stability, you can either install the analyzer in a temperature-controlled environment or zero the analyzer more frequently.



Side View



Front View

AMETEK[®]
PROCESS INSTRUMENTS

2876 Sunridge Way N.E., Calgary, AB T1Y 7H9
Ph. +1-403-235-8400, Fax +1-403-248-3550
www.ametekpi.com



© 2014, by AMETEK, Inc.
All rights reserved. Printed in the U.S.A.
F-0179 Rev 6 (0814)

One of a family of innovative process analyzer solutions from AMETEK Process Instruments.
Specifications subject to change without notice.

SALES, SERVICE AND MANUFACTURING:

USA - Pennsylvania

150 Freeport Road, Pittsburgh PA 15238 • Tel: +1-412-828-9040, Fax: +1-412-826-0399

USA - Delaware

455 Corporate Blvd., Newark DE 19702 • Tel: +1-302-456-4400, Fax: +1-302-456-4444

Canada - Alberta

2876 Sunridge Way N.E., Calgary AB T1Y 7H2 • Tel: +1-403-235-8400, Fax: +1-403-248-3550

WORLDWIDE SALES AND SERVICE LOCATIONS:

USA - Houston, Texas

Tel: +1-713-466-4900, Fax: +1-713-849-1924

BRAZIL

Tel: +55 19 2107 4100

CHINA

Beijing / Tel: +86 10 8526 2111, Fax: +86 10 8526 2141
Chengdu / Tel: +86 28 8675 8111, Fax: +86 28-8675 8141
Shanghai / Tel: +86 21 6426 8111, Fax: +86 21 6426 7818

USA - Austin, Texas

Tel: +1-512-252-2440, Fax: +515-252-2430

FRANCE

Tel: +33 1 30 68 89 20, Fax: +33 1 30 68 89 99

GERMANY

Tel: +49 21 59 91 36 0, Fax: +49 21 59 91 3639

INDIA

Tel: +91 80 6782 3200, Fax: +91 80 6782 3232

SINGAPORE

Tel: +65 6484 2388, Fax: +65 6481 6588